

Dear Sir/Mam

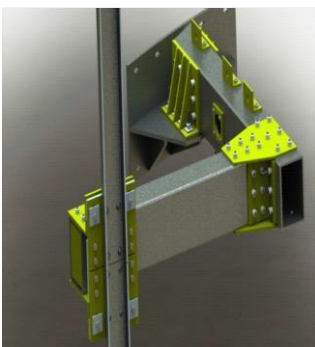
Glad to find your email address from website.

CANDID provides modularized solutions and services for the mining & port, energy, nuclear, chemical, electronics, pharmaceutical, sanitation and other industries worldwide since 2004, and we have a few indoor fabrication shops more than 30,000 m² in total and more than 200 experienced and professional fabrication workers, which enable to provide quality & safety, cost-effective and on-time fabrication services to our customers worldwide.

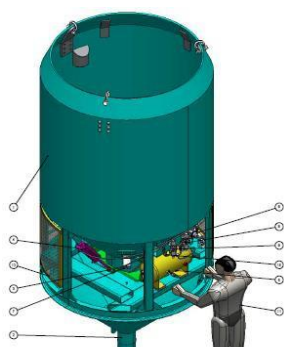
What we fabricate: Plateworks, Hoppers, Bins, Chutes, Forms & Rings, General Structural Steelwork. Hope that we can make a long-term cooperation.

Here are descriptions for 4 main parts of the mining solutions below:

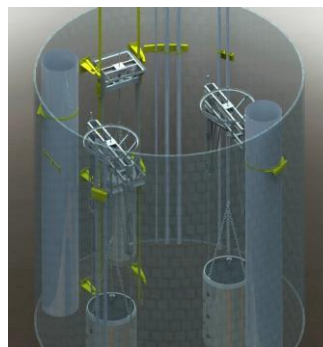
I. Vertical Convey System (Shaft Steel)



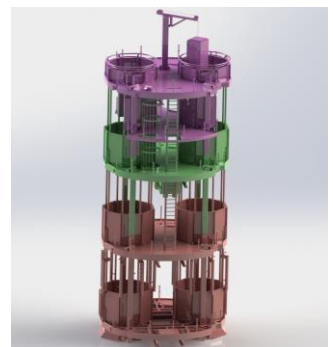
Guides & Buntons



Concrete Bucket



Sinking Buckets & Baskets



Galloway

Shaft steel is used to carry the adequate supply of men and material, and it's like a giant elevator underground. The depth of it ranges from 500m to 2000m, but frankly speaking, we can control the tolerance scope within 1mm for 1km, meanwhile, the guides & butons keep the structure secure horizontally.

II、 Isolation gate



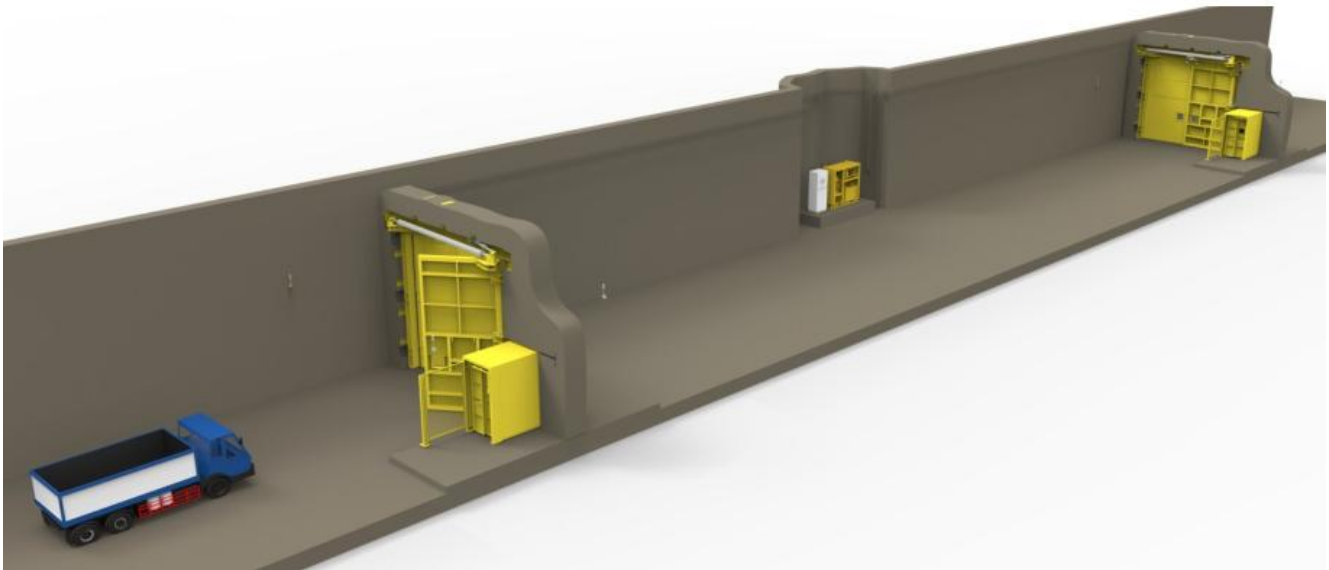
As for the system, it consists of isolation gate, hydraulic power station, valve assembly, PLC control unit and so on.....The isolation gates are designed for bulk, dry materials in a variety of applications. Besides, the isolation gate can be designed driven by different mode, such as manual mode, pneumatic mode, hydraulic mode and electrical mode. All kinds of gates allow your maintenance team to perform preventive repairs safely and easily without having to remove the gate during the process.

III. Modular Belt Conveyor



The belt conveyor is used to carry the material out of the mine with high capacity 17000TPH (Width ranges from 400mm-2400mm), and we are firmly convinced that the material conveyor system will become modularized and standardized design from the current customized solutions, also the material could be fire proof, antimagnetic, explosion-proof.....

IV.Vent door/ Air



“Z” type vent door



“U” type vent door

The ventilation door is one the most significant part of the mine equipments which ensures the way the air flows as we want, also keep the men's safety from the unknown dangerous gases or some unexpected emergencies. Also the actuator type could be manual, hydraulic, pneumatic and electrical.

V.Performance



LIST OF TYPICAL PROJECTS

Modular Solutions

| Project | Project Location | Industry | Client/End User | Scope of Supply | Scope of Work | Duration of Product & Services Provision | |
|--------------------------------------|----------------------|----------------|---|--|---------------------------------|--|-----------------------------|
| | | | | | | Start | Finish (Actual or Expected) |
| Iron Bridge Project | Australia | Iron Mine | FMG Magnetite Pty Ltd | Supply of Isolation Gates | Design, Supply & Field Services | 2020/2/12 | Current |
| Tripper Car Rejuvenation Project | Singapore | Gas | Shell Eastern Petroleum (Pte) Ltd | Tripper Car Conveyor, Modularized Belt Conveyor | Design, Supply & Field Services | 2019/1/21 | 2019/9/30 |
| MdA Expansion Phase 1 | Argentina | Chemical | FMC Corporation | Modularized RO package & IOX package | Design, Supply & Field Services | 2018/12/25 | Current |
| DSM BHT Modification | Shanghai, China | Chemical | DSM (Shanghai) LLC | Modularized Processing Water Skid | EPC | 2018/11/12 | 2019/5/15 |
| Cabot Inner Mongolia Project | Wuhai, China | Chemical | Cabot LLC | Modularized Water Treatment Skid | Design, Supply & Field Services | 2018/2/8 | 2018/8/30 |
| Coming VWGZ Project | Wuhan & Guangzhou | LCD/Glass | Coming Display Technologies (China) | Modularized Water Treatment Skid | Design, Supply & Field Services | 2018/3/1 | 2018/10/20 |
| Oyu Tolgoi Expansion Project | Oyu Tolgoi, Mongolia | Copper Mine | Oyu Tolgoi LLC | Modularized Water Treatment Skid, Pump Station | Design, Supply & Field Services | 2017/4/15 | 2017/9/10 |
| Oyu Tolgoi Expansion Project | Oyu Tolgoi, Mongolia | Copper Mine | Oyu Tolgoi LLC | Belt Conveyors, Mine Air Lock Systems, Includig Mine Vent Door, Hydraulic Power Packs, Controls & Accessories, | Design, Supply & Field Services | 2016/2/15 | Current |
| Nystar Port Pirie Expansion | Adelaide, Australia | Zinc Mine/Mill | Nystar Port Pirie Pty Ltd | Modular Shuttle Conveyors, Feeder Conveyors | Design, Supply & Field Services | 2014/6/10 | 2016/7/1 |
| Oriental Demineralized Water Project | Yangzhou, China | Chemicals | Oriental Petrochemical (Yangzhou) Corp. | Modular Demin Water Plant | EPC | 2014/1/10 | 2014/12/28 |
| Kazakhmys Aktogay Copper Project | Aktogay, Kazakhstan | Copper Mine | Kazakhmys Aktogay LLC | Modularize/Containerized Water Treatment Systems, Potable Water Skids | Design, Supply & Field Services | 2014/5/8 | 2016/8/30 |
| Oyu Tolgoi Project | Oyu Tolgoi, Mongolia | Copper Mine | Oyu Tolgoi LLC | Modularized Sewage Water Treatment Plant | Design, Supply & Field Services | 2012/8/6 | 2013/3/17 |
| Fuel Gas Power Plant | Iraq | Power Plant | Al Hartha, Mobile Power Plant / GE | Demin Water Plant | Design & Supply | 2012/2/17 | 2012/5/10 |
| DSM Zealand Project | Jilin China | Biochemical | DSM (Changchun) | Scraper Conveyors, Screw Conveyors | Design, Supply & Field Services | 2011/3/10 | 2011/7/15 |
| Fuel Gas Power Plant | Iraq | Power Plant | Al Hartha, Mobile Power Plant / GE. | Demin Water Plant | Design, Supply & Field Services | 2012/2/17 | 2012/5/10 |
| Dalian Dehao LED Project | Dalian, China | LED | Dehao Technology (Dalian) Co., Ltd. | DI Water Plant | EPC | 2011/2/18 | 2011/12/15 |
| YK Technology Suzhou Plant | Suzhou, China | Electronics | YK Technology (Suzhou) Co., Ltd. | DI Water Plant | EPC | 2010/5/8 | 2010/11/19 |
| Terumo Hangzhou FA Improvement | Hangzhou, China | Medicals | Terumo Hangzhou | Automated Conveyors and Assembling Line | Design, Supply & Field Services | 2010/2/5 | 2010/12/25 |
| AKZO NOBEL HCN Plant Project | Ningbo, China | Chemicals | AKZO NOBEL Chemicals (Ningbo) Co.Ltd | Skid-mounted Steam Temperature & Pressure Reducer Unit | Design, Supply & Field Services | 2009/4/11 | 2009/7/2 |
| PTFE Micro Powder Plastic Project | Changshu, China | Chemicals | Solvay Speciality Polymers (Changshu) Co., Ltd. | Pneumatic Box Tilters | Design, Supply & Field Services | 2007/12/17 | 2008/5/10 |

Fabrications

| Project | Project Location | Industry | Client/End User | Scope of Supply | Scope of Work | Duration of Product & Services Provision | |
|--|----------------------|----------------|---|---|--|--|-----------------------------|
| | | | | | | Start | Finish (Actual or Expected) |
| Oyu Tolgoi Expansion Project | Oyu Tolgoi, Mongolia | Copper Mine | Oyu Tolgoi LLC | Shaft #2 Shaft Guides and Steelwork, Ore Bins & Chutes, Concrete Buckets, Monorails, and other Steel Structures | Shop Details, Fabrication & Supply | 2016/2/15 | 2018/6/1 |
| Coming Hefei Batch Plant | Hefei, China | LCD/Glass | Coming Hefei | Batch Equipment, Magnet Separators, Hoppers/Chutes/Bins c/w Various Liners, Feeders, Mixers | Shop Details, Fabrication, Supply & Field Services | 2016/9/30 | 2017/6/20 |
| Nystar Port Pirie Expansion | Adelaide, Australia | Zinc Mine/Mill | Nystar Port Pirie Pty Ltd | Fully Assembled Sinter Pallets, Chutes & Hoppers, | Shop Details, Fabrication & Supply | 2014/6/10 | 2016/7/1 |
| Oyu Tolgoi Project | Oyu Tolgoi, Mongolia | Copper Mine | Oyu Tolgoi LLC | Shaft Guides & Burtons, Concrete Forms & Rings, Buckets, Ductwork, Rubber-lined Plateworks, Steel Structures | Shop Details, Fabrication & Supply | 2009/4/6 | 2014/3/20 |
| Sabic Thermo Plastics Production Project | Chongqing, China | PP | Sabic Innovative Plastics (Chongqing) Co., Ltd. | Hoppers, Chutes, Static Equipment | Shop Details, Fabrication & Supply | 2012/8/18 | 2013/6/17 |
| CDT M3 HPD UPGRADES 2012 | Japan | LCD/Glass | Coming USA / Copp.Cheryll | Batch Equipment, Magnet Separators, Hoppers/Chutes/Bins c/w Various Liners, Feeders, Mixers | Shop Details, Fabrication, Supply & Field Services | 2012/9/19 | 2012/12/20 |
| Coming Phase II Project (Beijing) | Beijing, China | LCD/Glass | Coming Display Technologies (China) | Batch Equipment, Bins, Chutes, Glass Unloader & Other Plateworks, Conveyors | Shop Details, Fabrication, Supply & Field Services | 2011/8/10 | 2012/12/19 |

Services

| Project | Project Location | Industry | Client/End User | Scope of Supply | Scope of Work | Duration of Product & Services Provision | |
|------------------------|-----------------------------|----------------------|-----------------------------|-----------------------------------|----------------------------------|--|-----------------------------|
| | | | | | | Start | Finish (Actual or Expected) |
| Yearly Spare Parts | Saudi Arabi | Petrochemical | Aramco Asia | Spare Parts for Demin Water Plant | Sourcing & Procurement | 2017/2/1 | Current |
| GVC OEM Valves | Wuzhousi, Shanghai, Jiaozou | Valves | Global Valves Controls, USA | Services | Inspection & Expediting | 2009/11/12 | Current |
| Oyu Tolgoi Project | Oyu Tolgoi, Mongolia | Copper Mine | Jacobs Shanghai | Engineering Services | Shop Detail Design, Calculations | 2013/5/10 | 2013/6/5 |
| Bayer Hangzhou Factory | Hangzhou, China | Chemical Engineering | Bayer Hangzhou | Misc Materials, Equipment | Sourcing & Procurement | 2008/5/2 | 2008/10/7 |

There were projects we've made, as the image showing, I am sure that some of them were known for you. And all the specifications for the mining equipments can be customized, we have full of confidence to meet your requirements.

If any interests, pls feel free to contact us.